

CONSEW Since 1898

Model 326S-UF

UPPER FEED (TOP AND BOTTOM FEED) CHAINSTITCH MACHINE

Also available: 326D-UF (2-needle)

326T-UF (Tandem 2-needle)

326-3-UF (3-needle)

WITH
AUTOMATIC LUBRICATION SYSTEM
DIAL-TYPE STITCH LENGTH REGULATION
with LOCKING FEATURE
REVERSE LEVER for COMPRESSED STITCHES

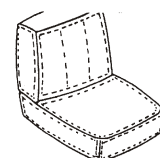
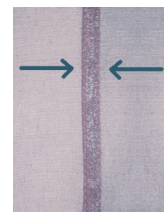


HIGH SPEED
1-NEEDLE, 2-NEEDLE/TANDEM, 3-NEEDLE
DROP FEED
ALTERNATING PRESSER FEET
DOUBLE CHAINSTITCH MACHINES

Model 326S-UF 326D-UF, 326T-UF, 326-3-UF

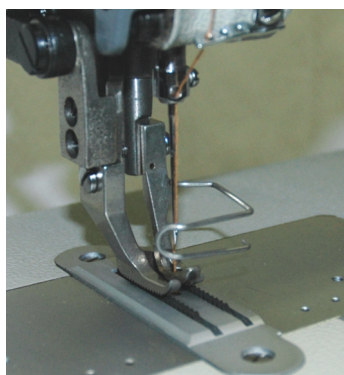
APPLICATIONS

- For sewing medium to heavy weight fabrics, upholstery, quilting, bedding, denim, leather, webbing, vinyl, work clothes, heavy sportswear, sports apparatus, tents, awnings, mattress borders, seat backs, etc. Use where the extra control of alternating presser feet is advantageous to sewing layers without slippage.
- Suitable for such operations as lap seam felling, hemming, binding, joining and plain stitching
- Designed for sewing stretchable seams



FEATURES

- Automatic lubrication
- Dial-type stitch length regulation with locking mechanism
- Link-type feeding mechanism and alternating presser feet keep layers together for efficient double chainstitching and eliminating slippage and puckering
- Also available as two needle - four thread double chainstitch – Models 326D-UF (*Double needle*), 326T-UF (*Double needle tandem*), 326-3-UF (*3 needle*)



Closeup showing upper feed alternating presser feet



Back view showing linkage for the upper feed



326-3-UF three needle setup

SPECIFICATIONS

Model 326S-UF

Speed, Max. (S.P.M.) *	2500	Bed Size	7" x 18-7/8" (178 x 478 mm)
* Depending on material, thread and operation.		Work Space	10" (258 mm)
Foot Lift	By Hand: 6mm / By Knee: 13mm	Stitch Type	401
Stitch Length, Max.	(1.4 - 8.0 mm)	326UFD: Two Needle Needle Distances	1/4" standard 1/8"-1/2" on request 5/16" and 3/8" on request
Needle	TV x 5 18-23		