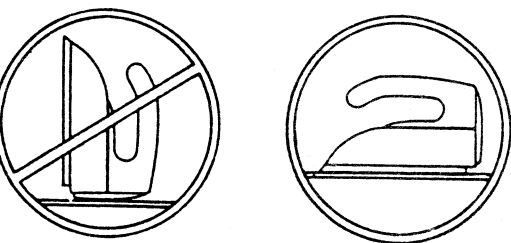


MODELS : ES—90A

HOW TO USE THE IRON

1. Hang bottle 1 meter above pressing surface.
(See Bottle Hanging Instruction)
2. Connect the black hose and to the iron, and clear hose end to the bottle
3. Empty demineralizer package into the bottle and fill it with tap water only.(if you want to use the demineralizer as an option.)
4. Tie the electrical cord and hose together.
5. Plug the iron cord into a grounded electrical outlet.
6. Set the temperature dial on NO. 4 and let the iron heat up for ten minutes.
7. Open the bottle valve and allow the hose to fill with water by pressing the steam switch.
The iron is now ready for use.
8. When not pressing, place the iron on the supplied iron rest.
9. Always unplug the iron when unattended or not in use.

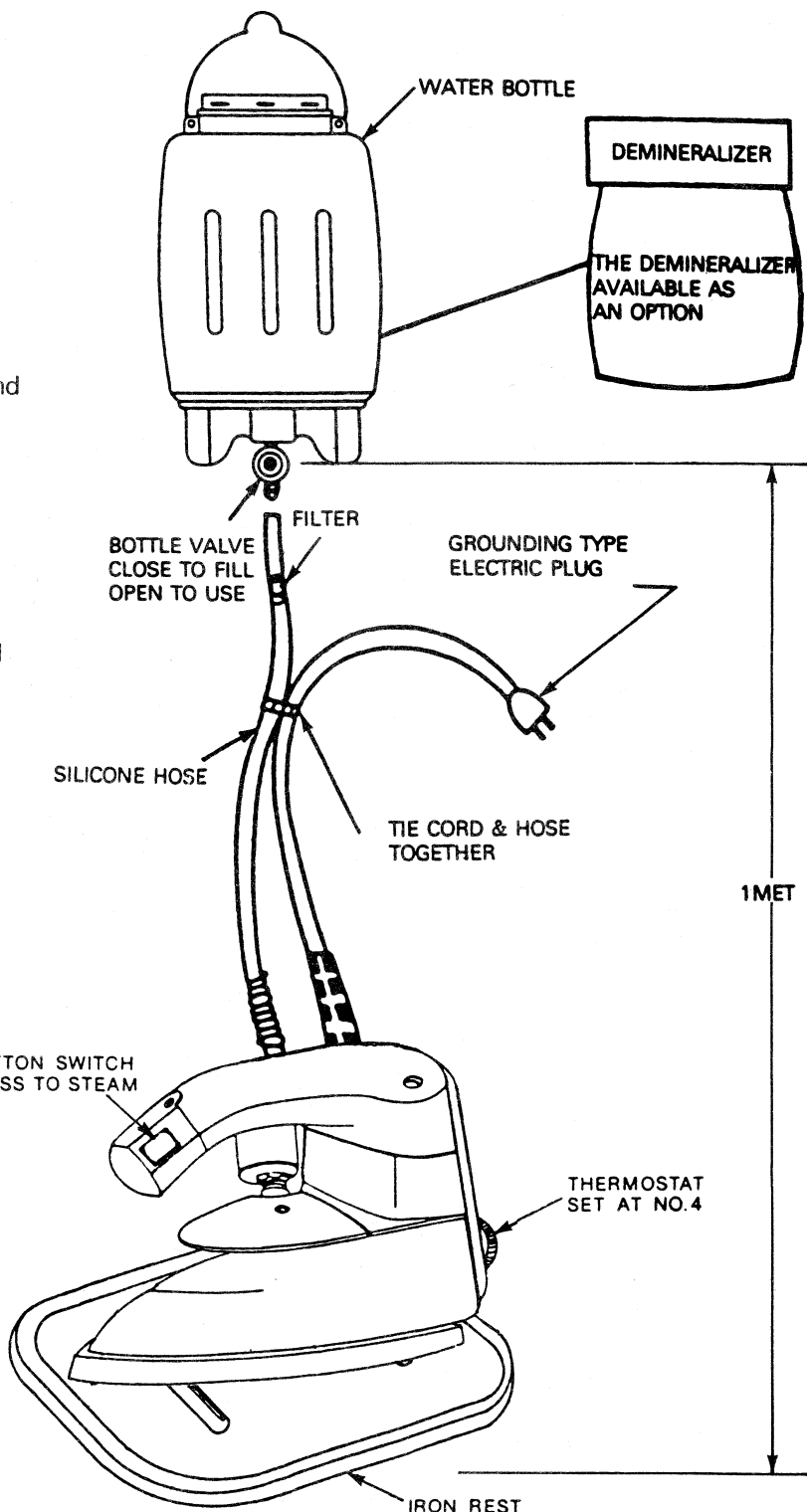
Do not stand iron on its back.



IMPORTANT NOTICE ABOUT DEMINERALIZER :

The demineralizer extends the life of the iron & prevents calcium build-up.

When the demineralizer changes from blue to brown, replace it by ordering a new package from your distributor.



PRESSING WITH CONSEW IRON

Now that your iron is properly set-up, please read the following tips for pressing with professional results. :

- Initially, to allow water to enter into the hose and iron, press the steam switch.
This may take a few seconds, then you will see steam.
- Begin to press.
- For best results, it is only necessary to press the steam switch for a few seconds at a time.
It is not necessary to activate the steam switch continuously.
- There are several settings on your temperature dial. Recommended temperature settings are as follows :
 - # 1, 2 - Preheat
 - # 3 - Silk and delicate fabrics(low temperature)
 - # 4 - Cotton and wool(medium temperature)
 - # 5 - Linen(high temperature)
- A teflon shoe is recommended and is available from your distributor to prevent garment shine and starch build-up
- When unattended or not in use, always turn off and unplug your iron.

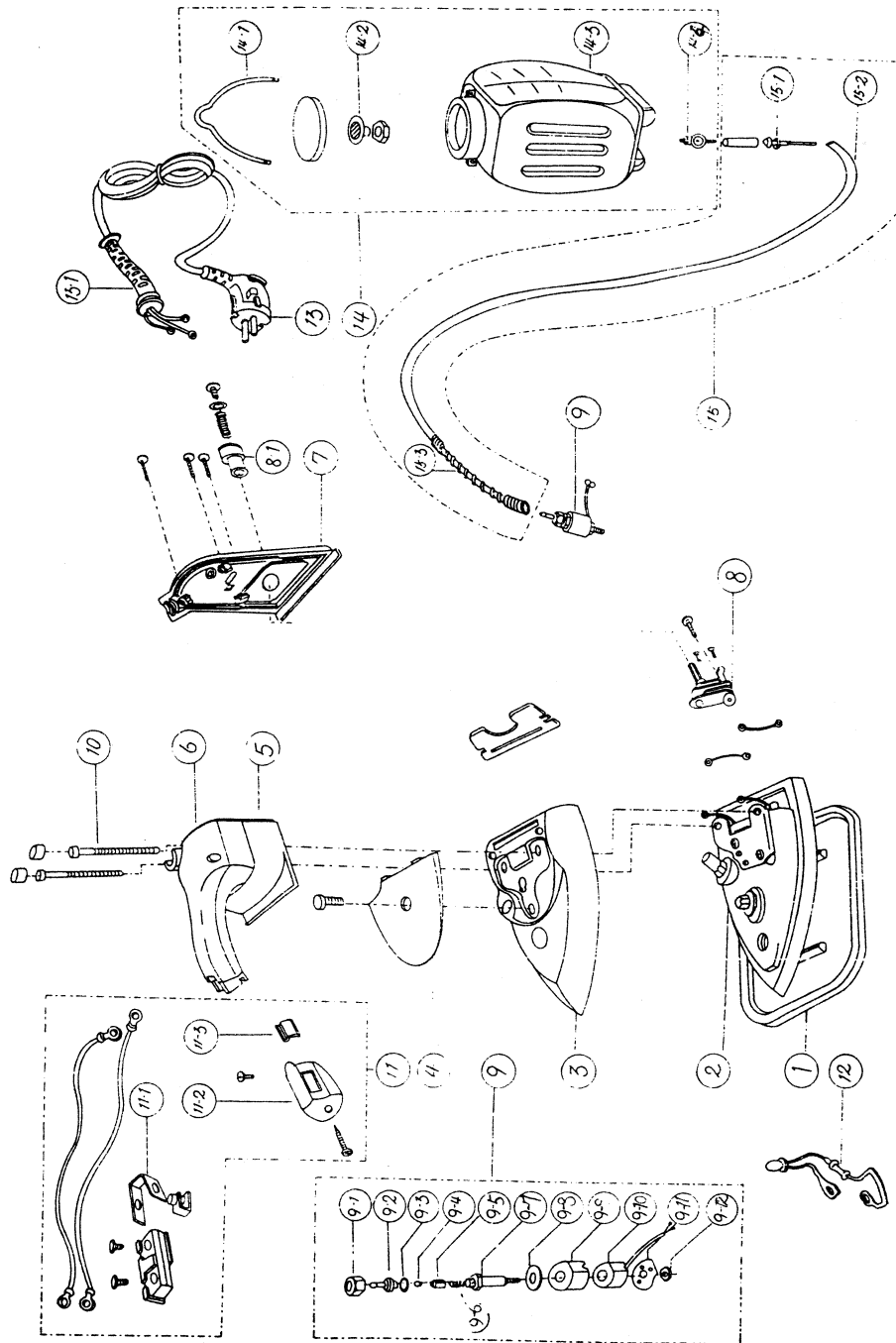
TROUBLE SHOOTING GUIDE

PROBLEM	PROBABLE CAUSE	SUGGESTED REMEDY
Iron does not heat.	No power to iron.	Check electric outlet.
	Temperature dial is in "OFF" position	Set temperature dial to No. 3, 4 or 5.
	Temperature dial is set on No. 1 or 2.	Set temperature dial to No. 3, 4 or 5.
No steam or very little steam.	Little or no water in bottle.	Fill bottle with water.
	Bottle not high enough.	Bottle must be 36" above the Pressing surface.
	Clogged filters.	Remove and rinse filter under water faucet.
	Clogged steam holes.	Clear holes with straightened paper clip.
Iron spits water.	Iron is not hot enough.	Turn temperature dial up(clockwise). Let iron heat up.
	Steam switch held down too long.	Release steam switch and let iron heat up.
Iron too hot.	Temperature dial is set too high.	Turn thermostat dial down (counter clockwise).
Iron not hot enough.	Temperature dial is set too low.	Turn thermostat dial up(clockwise).

IF THE ABOVE SUGGESTED REMEDIES DO NOT CORRECT YOUR PROBLEM, CONTACT YOUR DISTRIBUTOR FOR FURTHER INFORMATION.

Exploded View

NO	PART NO	DESCRIPTION	단위
1	19047	SILICONE IRON REST	90A본체
2	531100/531300	BASE ASSY(120V/220V)	90A커버
3	59010	COVER	열방지기판
4	51003	THERMO SHIELD	자부품#SET
5	511102	HANDLE BASE	자부품SET
6	511101	HANDLE	뒷커버
7	52001	BACK COVER	A902접기
8	21069	THERMOSTAT	조절기#SET
8-1	551200	THERMOSTAT KNOB ASSY	벨트SET
9	541100/541200	SOLENOID VALVE ASSY(120V/220V)	유기조임너트
9-1	14005	HOSE BARB NUT	벨트유지
9-2	14002	HOSE BARB SOLENOID	벨트오링
9-3	14004	VALVE O-RING	스팀개폐고무
9-4	14007	RUBBER PACKING	벨트핀
9-5	14101	VALVE PIN	벨트스프링
9-6	14011	VALVE SPRING	벨트몸통
9-7	14102	VALVE BODY	벨트명판
9-8	54001	VALVE NAME PLATE	코일커버
9-9	14039	VALVE COIL COVER	벨트코일
9-10	14501/14502	VALVE COIL(120V/220V)	커버와사
9-11	14038	COIL COVER WASHER	일니트
9-12	14019	LOCKING NUT	전퍼볼트
10	51009	SOCKET HEAD BOLT(M5×65)	자부품SET
11	511100	HANDLE CAP SET	벨트SET
12	52103	LAMP ASSY	전원코드#SET
13	58901/58902	LINE CORD(120V/220V)	복싱
13-1	21070	CORD PROTECTOR	몸통SET
14	161000	WATER BOTTLE ASSY	몸통고리
14-1	16009	HANGER BOTTLE ASSY	필터
14-2	16102	FILTER	몸통
14-3	16010	WATER BOTTLE	꼭지SET
14-4	16107	WATER VALVE	실리콘호스SET
15	16108	SILICONE HOSE SET	필터
15-1	16018	FILTER	실리콘호스
15-2	16031	SILICONE HOSE	실리콘호스#스프링
15-3	16003	SILICONE HOSE SPRING	

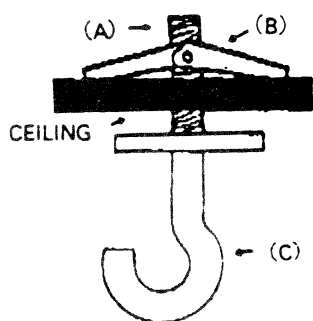


CEILING HOOK INSTALLATION INSTRUCTIONS

IMPORTANT : CAUTION—DO NOT SLIDE ELECTRICAL WIRE OR WATER HOSE OVER HOOK. SLIDE CHAIN LINK ONLY OVER HOOK.

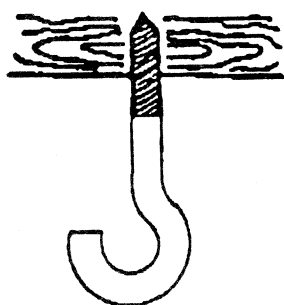
CAUTION—Injury to persons or damage to the ceiling may result if the bottle or mounting hardware is pulled from the ceiling. To avoid such injury, mount only to ceiling members that are structurally sound.

FOR HOLLOW CEILINGS :



- 1) Drill 5/8" diameter hole in the ceiling at desired hook location.
- 2) Assemble toggle bolt by screwing bolt (A) into toggle (B).
- 3) Insert flaps and bolt assembly (A/B) hinge up into ceiling hole with the bolt (A) protruding through ceiling. Lock assembly by turning hook (C) clockwise until firmly seated.

FOR WOOD BEAM CEILINGS



Screw hook clockwise into ceiling until firmly seated.

FOR EITHER METHOD

Hang the bottle assembly by a chain from the hook so that the bottom of the bottle is 1 METER (1 Yardstick) from the water inlet on the iron.