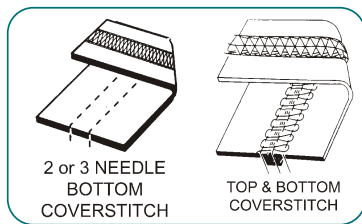


Models CN-897VF-7DD and CN-897VC-7DD

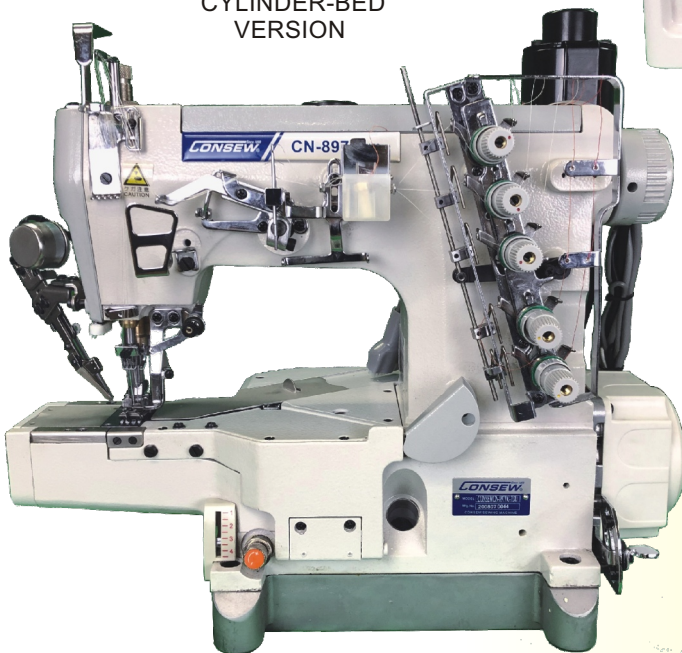
CN-897VFB-7DD and CN-897VCB-7DD for Binding Attachments

V-SERIES, **DIRECT DRIVE**, HIGH SPEED COVERSTITCH MACHINES

WITH
DIRECT DRIVE BUILT-IN MOTOR
FULLY AUTOMATIC LUBRICATION
DIFFERENTIAL FEED with MICROMETRIC ADJUSTMENT
PUSHBUTTON STITCH REGULATOR
THREAD LUBRICATING AND NEEDLE COOLING SYSTEM



Model CN-897VC-7DD
CYLINDER-BED
VERSION



Model CN-897VF-7DD
FLAT-BED VERSION



TWO NEEDLE — 4 THREAD
THREE NEEDLE — 5 THREAD
FLAT-BED AND CYLINDER-BED
for PLAIN SEAMING
BOTTOM HEMMING and ELASTIC ATTACHING

Models CN-897VF-7DD and CN-897VC-7DD / CN-897BVF-7DD and CN-897BVC-7DD

APPLICATIONS

- For sewing light to heavy-weight materials.
- Model 897VF – Flat-bed for general seaming
- Model 897VC – Cylinder-bed for general seaming
- Both models suitable for hemming, tape binding, elastic inserting, etc.

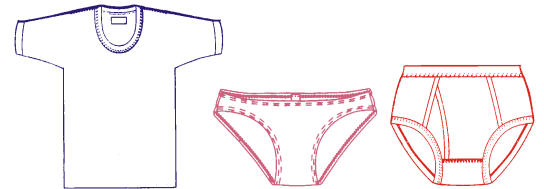


FEATURES

- Direct Drive Built-In Motor
- Speed, Max. up to 6000 s.p.m.*
- Push-button stitch regulator
- External cooling of oil supply
- Fully automatic lubrication with visual flow controls
- Lubricating oil continuously filtered by replaceable filter
- Differential feed with micrometric adjustment for shirring and stretching. Ratio up to 4 to 1.
- Intermittent action possible
- Standard type UY128GAS needles

AVAILABLE OPTIONS

- UTA** • Under thread trimming device (pneumatic)
- ST** • Top cover thread trimming device
- UTM** • Under thread trimming device (electric)
- W** • Thread wiper (electric)
- EC** • Tape Cutter (electric)



CONFIGURATIONS

| MODEL | NEEDLES | LOOPERS | THREADS |
|--------------|---------|---------|---------|
| CN-897VF-7DD | 2 | 2 | 4 |
| CN-897VF-7DD | 3 | 2 | 5 |
| CN-897VC-7DD | 2 | 2 | 4 |
| CN-897VC-7DD | 3 | 2 | 5 |

Note: Removing a needle allows for different widths of cover stitch and bottom cover only

SPECIFICATIONS

MODEL CN-897VC-7DD

| | |
|------------------------------------|-----------------------------|
| MAX. SEWING SPEED: | 6,000 S.P.M. |
| LIFT OF PRESSER FOOT: | 7.0 mm |
| DIFFERENTIAL RATIO: | 1 : 0.3 ~ 1 : 2.9 |
| STANDARD NEEDLE GA.: | Comes with 3-needle, 5.6 mm |
| (Optional Needle Gauges available) | |
| 2 Needles: | 3.2, 4.0, 4.8, 5.6, 6.4 mm |
| 3 Needles: | 5.6, 6.4 mm |
| STITCH LENGTH: | 1.4 ~ 3.6 mm |
| NEEDLE BAR STROKE: | 31 mm |
| NEEDLE SYSTEM: | UY128GAS |

MODEL CN-897VF-7DD

| | |
|------------------------------------|-----------------------------|
| MAX. SEWING SPEED: | 6,000 S.P.M. |
| LIFT OF PRESSER FOOT: | 7.0 mm |
| DIFFERENTIAL RATIO: | 1 : 0.7 ~ 1 : 2.0 |
| STANDARD NEEDLE GA.: | Comes with 3-needle, 5.6 mm |
| (Optional Needle Gauges available) | |
| 2 Needles: | 3.2, 4.0, 4.8, 5.6, 6.4 mm |
| 3 Needles: | 5.6, 6.4 mm |
| STITCH LENGTH: | 1.4 ~ 3.6 mm |
| NEEDLE BAR STROKE: | 31 mm |
| NEEDLE SYSTEM: | UY128GAS |

* Speed depends on operation, materials and thread

