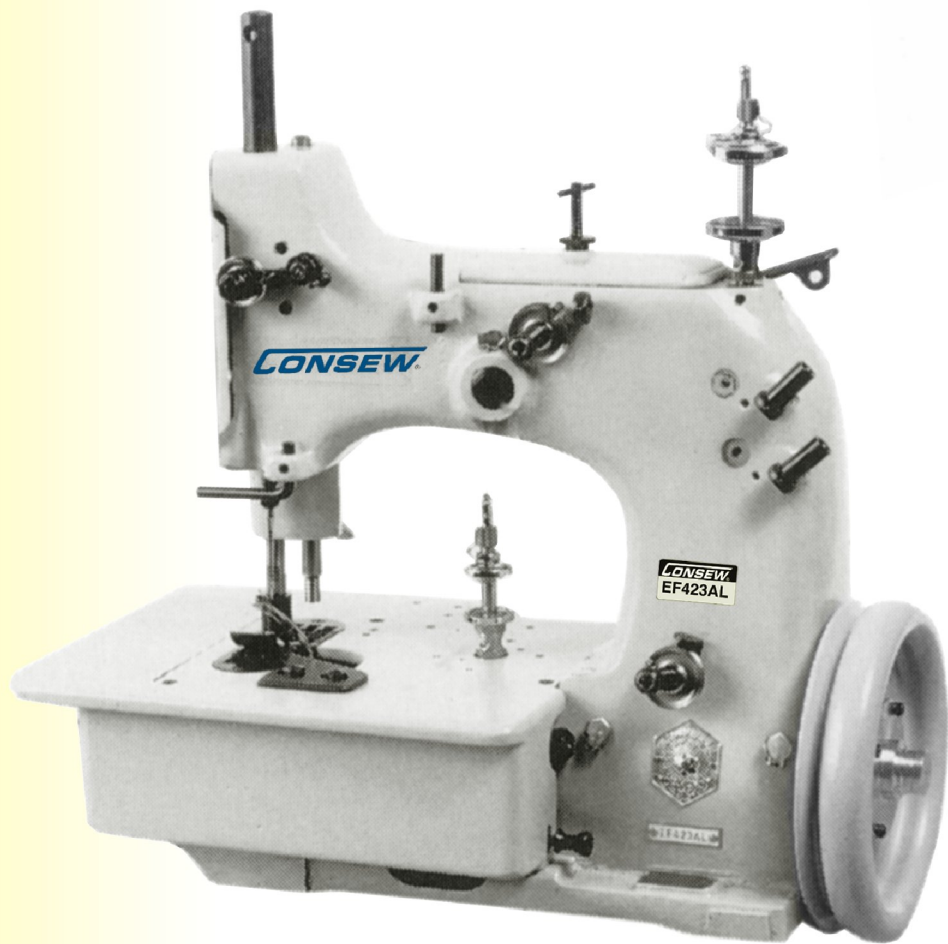
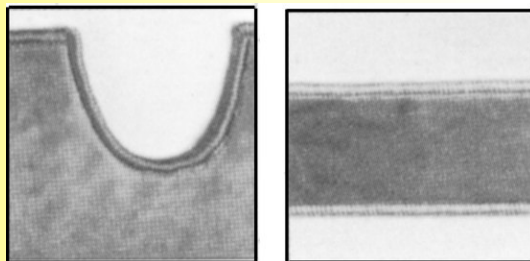


CONSEW Since 1898

Models EF423AL / EF423AL-H CARPET OVEREDGING MACHINES



OVERLOCK-COVERSTITCH



HEAVY DUTY
SINGLE NEEDLE
THREE THREAD

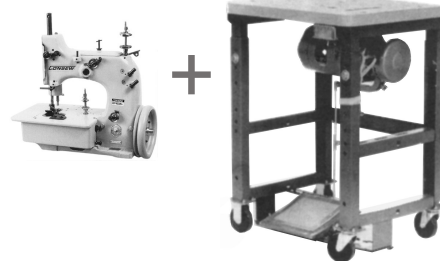
Models EF423AL / EF423AL-H

APPLICATIONS

- This machine is designed for overedging heavy weight carpets and rugs.
- It can easily sew even the high piles or the fast backing materials.

FEATURES

- One needle, three threads.
- By changing a presser foot and cloth guide (special order parts), you can also overedge around curves.



Available as a complete assembled unit with heavy duty steel stand, formica-type table top and 110 VAC motor.
Also Available with 220v. motor

SPECIFICATIONS

Max Speed	2000 s.p.m. *
Stitch Range	3 – 7mm.
Width of Overedging	15/32" (12 mm) – EF423AL 19/32" (15 mm) – EF423AL-H
Material Thickness Capability	19/32" (15 mm)
Needle	EF x 42 (# 26)

* Speed depends on operation, thread and materials being sewn.