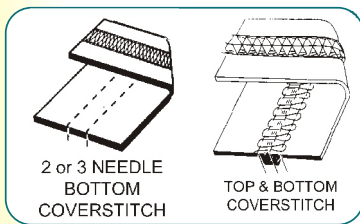


Models **CN-897VF-7DD** and **CN-897VC-7DD**

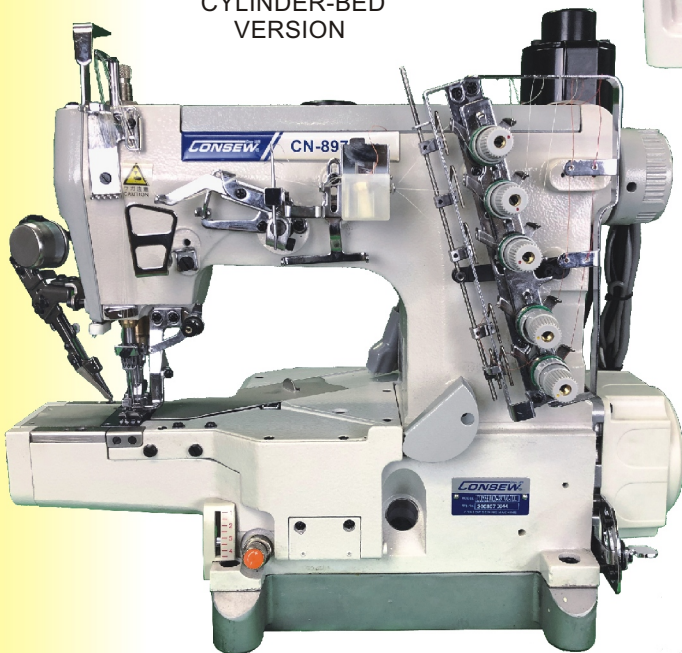
CN-897VFB-7DD and **CN-897VCB-7DD** for Binding Attachments

V-SERIES, **DIRECT DRIVE**, HIGH SPEED COVERSTITCH MACHINES

WITH
DIRECT DRIVE BUILT-IN MOTOR
FULLY AUTOMATIC LUBRICATION
DIFFERENTIAL FEED with MICROMETRIC ADJUSTMENT
PUSHBUTTON STITCH REGULATOR
THREAD LUBRICATING AND NEEDLE COOLING SYSTEM



Model **CN-897VC-7DD**
CYLINDER-BED
VERSION



Model **CN-897VF-7DD**
FLAT-BED VERSION



TWO NEEDLE — 4 THREAD
THREE NEEDLE — 5 THREAD
FLAT-BED AND CYLINDER-BED
for PLAIN SEAMING
BOTTOM HEMMING and ELASTIC ATTACHING

Models CN-897VF-7DD and CN-897VC-7DD / CN-897BVF-7DD and CN-897BVC-7DD

APPLICATIONS

- For sewing light to heavy-weight materials.
- Model 897VF – Flat-bed for general seaming
- Model 897VC – Cylinder-bed for general seaming
- Both models suitable for hemming, tape binding, elastic inserting, etc.

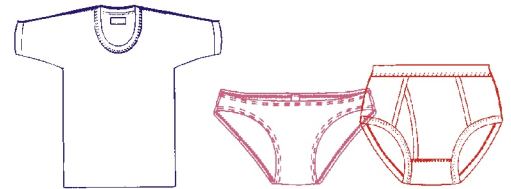


FEATURES

- Direct Drive Built-In Motor
- Speed, Max. up to 6000 s.p.m.*
- Push-button stitch regulator
- External cooling of oil supply
- Fully automatic lubrication with visual flow controls
- Lubricating oil continuously filtered by replaceable filter
- Differential feed with micrometric adjustment for shirring and stretching. Ratio up to 4 to 1.
- Intermittent action possible
- Standard type UY128GAS needles

AVAILABLE OPTIONS

- UTA** • Under thread trimming device (pneumatic)
- ST** • Top cover thread trimming device
- UTM** • Under thread trimming device (electric)
- W** • Thread wiper (electric)
- EC** • Tape Cutter (electric)



CONFIGURATIONS

MODEL	NEEDLES	LOOPERS	THREADS
CN-897VF-7DD	2	2	4
CN-897VF-7DD	3	2	5
CN-897VC-7DD	2	2	4
CN-897VC-7DD	3	2	5

Note: Removing a needle allows for different widths of cover stitch and bottom cover only

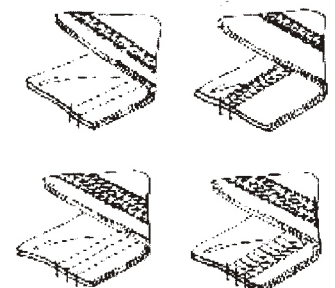
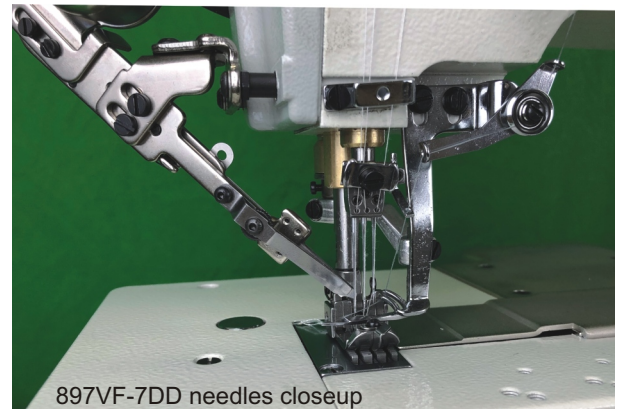
SPECIFICATIONS

MODEL CN-897VC-7DD

MAX. SEWING SPEED:	6,000 S.P.M.
LIFT OF PRESSER FOOT:	7.0 mm
DIFFERENTIAL RATIO:	1 : 0.3 ~ 1 : 2.9
STANDARD NEEDLE GA.:	Comes with 3-needle, 5.6 mm
(Optional Needle Gauges available)	
2 Needles:	3.2, 4.0, 4.8, 5.6, 6.4 mm
3 Needles:	5.6, 6.4 mm
STITCH LENGTH:	1.4 ~ 3.6 mm
NEEDLE BAR STROKE:	31 mm
NEEDLE SYSTEM:	UY128GAS

MODEL CN-897VF-7DD

MAX. SEWING SPEED:	6,000 S.P.M.
LIFT OF PRESSER FOOT:	7.0 mm
DIFFERENTIAL RATIO:	1 : 0.7 ~ 1 : 2.0
STANDARD NEEDLE GA.:	Comes with 3-needle, 5.6 mm
(Optional Needle Gauges available)	
2 Needles:	3.2, 4.0, 4.8, 5.6, 6.4 mm
3 Needles:	5.6, 6.4 mm
STITCH LENGTH:	1.4 ~ 3.6 mm
NEEDLE BAR STROKE:	31 mm
NEEDLE SYSTEM:	UY128GAS



* Speed depends on operation, materials and thread